

Ergro® K Excel

3-26-36

Foliar Fertilizer with
Fulvic Acids



RECOMMENDATIONS AND DOSAGE

<u>Crop</u>	<u>lb/acre per application</u>
Vegetables: Tomato, Pepper, Cucumber, Eggplant, Squash	2.0-2.5
Broccoli, Cauliflower, Watermelon, Cantaloupe	2.0-2.5
Cotton, Garlic, Onion, Beans	1.5-2.0
Corn, Wheat, Oat, Barley, Sorghum, Saffron, Rye, Rice, Chickpea	1.0-2.0
Sugar cane	2.0-3.0
Potato, Sweet Potato	2.0-3.0
Low portage fruit trees	2.0-2.5
High portage fruit trees	3.0-4.0

We recommend to apply **Ergro®K Excel** to promote better **fructification** and **maturity** of your crop.

Application Time

1st application: **After the fruit formation.**

2nd application: 2-3 weeks after the 1st application.

Ergro® K Excel
a product of:



Ergo Corporación, S.A de C.V.

Information about the components of this lot of fertilizer may be obtained by writing to
Ergo Corporación, S.A de C.V.

Maestros No. 50, Tlalnepantla, Edo. de Mexico.

www.agroergo.com

Distributed & Guaranteed exclusively in the
United States by Ag Nutrition, LLC



AG Nutrition

Ag Nutrition, LLC

10388 Tremont Drive,
Fishers, Indiana 46037
U.S.A.

Ph: (317) 288-4951

www.ag-nutrition.com

DESCRIPTION

Ergro® K Excel is a foliar fertilizer enriched with fulvic acids.

Ergro® K Excel is designed and balanced formulated to be applied in all kinds of agricultural crops.

Ergro® K Excel contains Nitrogen, Phosphate and Potassium and essential micro nutrients to provide good nutrition.

MAIN BENEFITS USING Ergro® K Excel.

The high percentage of **Potassium** in **Ergro® K Excel** promotes good **fructification** and **maturity** in the plants, among other benefits.

The balance of the macro and micro nutrients present in **Ergro® K Excel** results in harmonic plant development and an increase in the crop yields.

APPLICATION

Ergro® K Excel can be applied many times to complement the crop nutrition. Usually we recommend applying from 1 to 2 times per crop season.

Apply **Ergro® K Excel** using your normal foliar application system.

IMPORTANT

In order to immediately confirm the benefits of **Ergro® K Excel** follow your regular crop practices without **Ergro® K Excel** on a small area of your field and leave it as a check plot. In another side of your field follow your regular crop practices and add **Ergro® K Excel**. After 10-20 days compare your crops. You will be able to see the difference in the Fructification Process and Maturity. Furthermore, at harvest time you will see the difference in the production and quality.

In general better results are obtained using the recommended dosage of **Ergro® K Excel** mixed with the recommended dosage of our products **Ergro® Crop** and **Ergro® Stim**.

CAUTION

Ergro® K Excel is non toxic when used as directed.

If mixed with pesticides, please follow the label directions of those products.

Do not store with food products. Do not reuse the container, destroy it. Do not leave within the reach of children.

GUARANTEE

Ergro® K Excel components are guaranteed. However, as we do not have any control in its use we take no responsibility for the results obtained.

GUARANTEED ANALYSIS

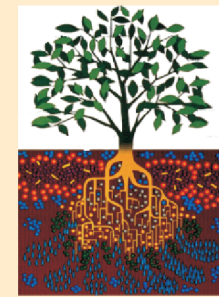
Total Nitrogen (N).....	3.00%
3.00% Ammoniacal Nitrogen	
Available Phosphorus (as P ₂ O ₅).....	26.00%
Soluble Potash (K ₂ O).....	36.00%
Inorganic:	
Calcium (Ca).....	0.15%
Magnesium (Mg).....	0.03%
Sulfur (S).....	0.39%
Boron (B).....	0.17%
Cobalt (Co).....	0.02%
Iron (Fe).....	0.12%
Manganese (Mn).....	0.17%
Molybdenum (Mo).....	0.16%
Zinc (Zn).....	0.01%
Organic	
Fulvic Acid.....	6.25%

Derived From: Urea, Mono Potassium Phosphate, Potassium Sulfate, Zinc Sulfate, Magnesium Sulfate, Copper Sulfate, Ferrous Sulfate, Manganese Sulfate, Sodium Molybdate, Sodium Tetraborate (Borax), Cobalt Sulfate, Citric Acid.

Fulvic Acids are derived from vegetative organic matter.

Fulvic Acids may enhance soil micronutrients availability within the soil, and may enhance nutrient uptake.

Caution: The application of fertilizers containing molybdenum may result in a forage crops containing levels of molybdenum which are toxic to ruminant animals.



FOR ALL CROPS